



Ion exchange columns and media

Selection Guide



General information

Principle of Ion Exchange Chromatography

Ion exchange (IEX) chromatography can separate molecules or groups of molecules that have only slight differences in charge. Separation is based on the reversible interaction between a charged molecule and an oppositely charged chromatography medium. Typically, conditions are selected to ensure that the molecules of interest bind to the medium as they are loaded onto the column. Conditions are then altered so that the bound substances are eluted differentially. Elution is most often performed by a continuous gradient or a stepwise increase in ionic strength, most commonly using NaCl. Figure 1 shows a typical high resolution gradient elution. A stepwise elution is illustrated in Figure 3.

Proteins are built up of many different amino acids containing weak acidic and basic groups (i.e., ionizable groups) that can be titrated. Hence, the net surface charge of a protein is highly pH dependent and will change gradually as the pH of the environment changes. Each protein has its own unique net charge versus pH relationship which can be visualized as a titration curve (Figure 2). This curve reflects how the overall net charge of the protein changes according to the pH of the surroundings. IEX can be repeated at different pH values to separate several proteins which have distinctly different charge properties. Figure 2 shows how selecting the correct pH is one of the most important parameters in achieving satisfactory separation.

Choice of ion exchanger

Begin with a strong exchanger (Q, S, SP) to enable development work to be performed over a broad pH range. Use a strong anion exchanger (Q) to bind the protein(s) of interest if their isoelectric point is below pH 7.0 or unknown.

Use a strong exchanger in those cases where maximum resolution occurs at an extreme pH and the proteins of interest are stable at that pH.

Consider using a weak exchanger (DEAE, ANX, CM) if the selectivity of the strong ion exchanger is unsatisfactory, but remember that the ion exchange capacity of a weak ion exchanger varies with pH.

Multimodal ligands (MMC, adhere) provide ionic interaction, hydrogen bonding and hydrophobic interaction. MMC behaves like a weak cation exchanger, but allows binding at high conductivity. Adhere behaves as a strong anion exchanger.

Chromatography media selection

Select the ion exchange medium according to the objective of the purification step and the condition of the starting material. Other factors such as sample stability, scale, speed, binding capacity and equipment available may also influence the final choice.

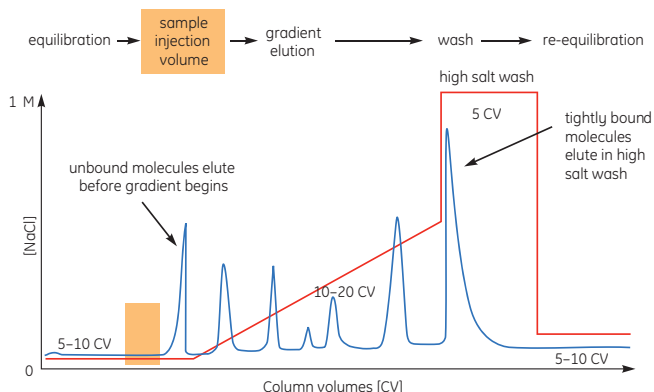


Fig 1. Typical IEX separation using gradient elution.

Selectivity and buffer pH

Figure 2 shows the effect of pH on selectivity. The separation of three hypothetical proteins at different pH is described below, and the four scenarios are illustrated in the figure (see numbered arrows).

1. Most acidic pH: all three proteins are below their isoelectric point, positively charged, and bind only to a cation exchanger. Proteins are eluted in the order of their net charge.

2. Less acidic pH: the blue protein is above its isoelectric point, negatively charged, and the other proteins are still positively charged. Blue protein binds to an anion exchanger and can be separated from the other proteins which wash through. Alternatively, red and green proteins can be separated on a cation exchanger and the blue protein washes through.

3. Most alkaline pH: all three proteins are above their isoelectric point, negatively charged, and bind only to the anion exchanger. Proteins are eluted in the order of their net charge.

4. Less alkaline pH: the red protein is below its isoelectric point, positively charged. Red protein binds to the cation exchanger, while the other proteins wash through. Alternatively, blue and green proteins can be separated on an anion exchanger and the red protein washes through.

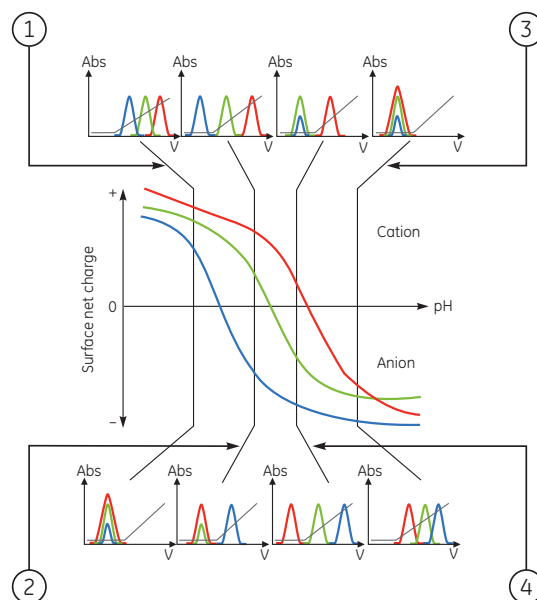


Fig 2. Effect of pH on selectivity (elution patterns).

Sample preparation

Correct sample preparation is essential in order to achieve optimal separation and avoid deterioration in column performance. Samples must be clear and free from particulate matter.

To remove particulate matter, filter (see Buffer Preparation for filter sizes) or centrifuge (10 000 g for 15 min).

Desalt samples and transfer into the chosen start buffer using HiTrap™ Desalting 5 ml (volumes up to 1.5 ml) or HiPrep™ 26/10 Desalting (volumes up to 15 ml).

Very small sample volumes in high salt concentration, with no major contaminants, can be diluted with start buffer to lower the salt concentration to a level that does not interfere with binding to the medium.



Column cleaning

Correct preparation of samples and buffers and application of a high salt wash (1 M NaCl) at the end of each separation should keep most columns in good condition. However, reduced performance, a slow flow rate, increasing back pressure or complete blockage are all indications that the medium needs to be cleaned using more stringent procedures in order to remove contaminants.

It is recommended to reverse the direction of flow during column cleaning so that contaminants do not need to pass through the entire length of the column. The number of column volumes and time required for each cleaning step may vary according to the degree of contamination. If the cleaning procedure to remove common contaminants does not restore column performance, change the top filter (when possible) before trying alternative cleaning methods. Care should be taken when changing a filter as this may affect the column packing and interfere with performance.

Note: For recommended flow rates, refer to the table "Products for Ion Exchange."

Removal of common contaminants

The following procedure should be satisfactory to remove common contaminants:

1. Wash with at least 2 column volumes (CV) of 2 M NaCl.
2. Wash with at least 4 CV of 1 M NaOH (same flow as step 1).
3. Wash with at least 2 CV of 2 M NaCl (same flow as step 1).
4. Rinse with at least 2 CV of distilled water (same flow as step 1) until the UV-baseline and eluent pH are stable.
5. Wash with at least 4 CV of start buffer or storage buffer (same flow as step 1) until pH and conductivity values have reached the required values.

Removal of precipitated proteins

1. Inject 1 CV of pepsin (1 mg/ml in 0.5 M NaCl, 0.1 M acetic acid). Leave overnight at room temperature or for 1 h at 37°C.
2. Rinse with at least 2 CV of distilled water until the UV-baseline and the eluent pH are stable.
3. Wash with at least 4 CV of start buffer or storage buffer, same flow as step 2, until eluent pH and conductivity have reached the required values.

Alternative procedure:

1. Wash with 2 CV of 6 M guanidine hydrochloride.
2. Wash immediately with at least 5 CV of buffer at pH 7–8.
3. Rinse with at least 2 CV of distilled water (same flow as step 2) until the UV-baseline and eluent pH are stable.
4. Wash with at least 4 CV of start buffer or storage buffer (same flow as step 2) until pH and conductivity values have reached the required values.

Removal of lipids, hydrophobically bound proteins or lipoproteins

Organic solvents or detergents may be required to completely remove contaminants of this type.

Before using organic solvents, wash the medium with at least 4 CV of distilled water to avoid any salts precipitating on the column.

When applying organic solvents or solutions it may be necessary to reduce the flow rate to avoid over-pressuring the column.

Use cleaning solutions such as up to 100% isopropanol, up to 100% methanol, up to 100% acetonitrile, up to 2 M NaOH, up to 75% acetic acid, up to 100% ethanol, ionic or non-ionic detergents. Always check for solvent compatibility in the instructions supplied with the medium or column.

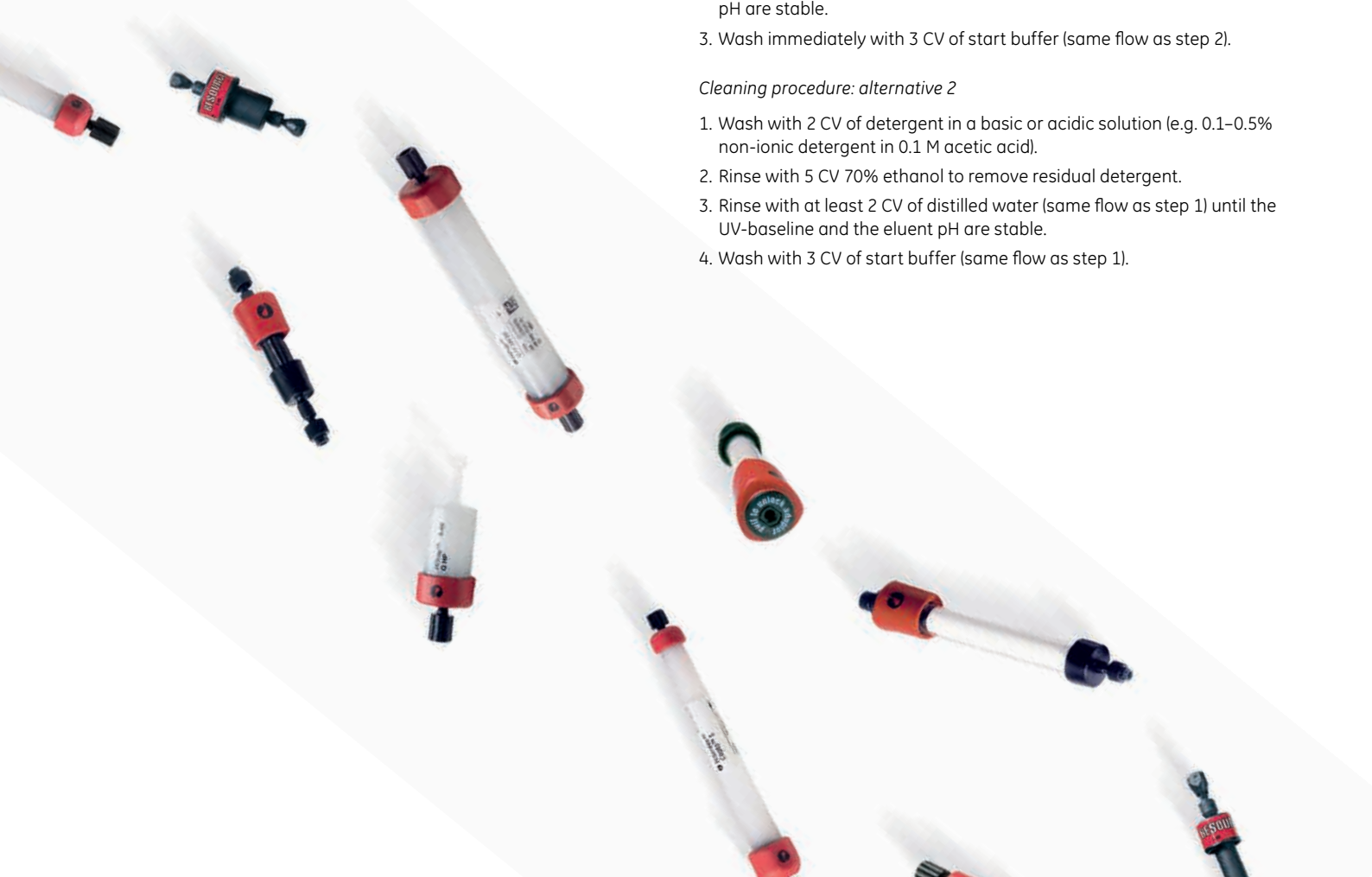
Avoid anionic detergents with Q, DEAE and ANX charged groups. Avoid cationic detergents with S, SP and CM charged groups.

Cleaning procedure: alternative 1

1. Wash with 4 CV of up to 70% ethanol or 30% isopropanol.
2. Rinse with at least 2 CV of distilled water until the UV-baseline and eluent pH are stable.
3. Wash immediately with 3 CV of start buffer (same flow as step 2).

Cleaning procedure: alternative 2

1. Wash with 2 CV of detergent in a basic or acidic solution (e.g. 0.1–0.5% non-ionic detergent in 0.1 M acetic acid).
2. Rinse with 5 CV 70% ethanol to remove residual detergent.
3. Rinse with at least 2 CV of distilled water (same flow as step 1) until the UV-baseline and the eluent pH are stable.
4. Wash with 3 CV of start buffer (same flow as step 1).



Technical information

Table 1. Non-volatile and volatile buffer systems

Buffers for anion exchange chromatography

pH interval	Substance	Conc. (mM)	Counter-ion	pKa (25°C) ¹
4.3–5.3	N-Methylpiperazine	20	Cl ⁻	4.75
4.8–5.8	Piperazine	20	Cl ⁻ or HCOO ⁻	5.33
5.5–6.5	L-Histidine	20	Cl ⁻	6.04
6.0–7.0	Bis-Tris	20	Cl ⁻	6.48
6.2–7.2	Bis-Tris propane	20	Cl ⁻	6.65
8.6–9.6	Bis-Tris propane	20	Cl ⁻	9.10
7.3–8.3	Triethanolamine	20	Cl ⁻ or CH ₃ COO ⁻	7.76
7.6–8.6	Tris	20	Cl ⁻	8.07
8.0–9.0	N-Methyldiethanolamine	20	SO ₄ ²⁻	8.52
8.0–9.0	N-Methyldiethanolamine	50	Cl ⁻ or CH ₃ COO ⁻	8.52
8.4–9.4	Diethanolamine	20 at pH 8.4 50 at pH 8.8	Cl ⁻	8.88
8.4–9.4	Propane 1,3-diamino	20	Cl ⁻	8.88
9.0–10.0	Ethanolamine	20	Cl ⁻	9.50
9.2–10.2	Piperazine	20	Cl ⁻	9.73
10.0–11.0	Propane 1,3-diamino	20	Cl ⁻	10.55
10.6–11.6	Piperidine	20	Cl ⁻	11.12

¹ Ref: Handbook of chemistry and physics, 83rd edition, CRC, 2002–2003.

Buffers for cation exchange chromatography

pH interval	Substance	Conc. (mM)	Counter-ion	pKa (25°C) ¹
1.4–2.4	Maleic acid	20	Na ⁺	1.92
2.6–3.6	Methyl malonic acid	20	Na ⁺ or Li ⁺	3.07
2.6–3.6	Citric acid	20	Na ⁺	3.13
3.3–4.3	Lactic acid	50	Na ⁺	3.86
3.3–4.3	Formic acid	50	Na ⁺ or Li ⁺	3.75
3.7–4.7	Succinic acid	50	Na ⁺	4.21
5.1–6.1	Succinic acid	50	Na ⁺	5.64
4.3–5.3	Acetic acid	50	Na ⁺ or Li ⁺	4.75
5.2–6.2	Methyl malonic acid	50	Na ⁺ or Li ⁺	5.76
5.6–6.6	MES	50	Na ⁺ or Li ⁺	6.27
6.7–7.7	Phosphate	50	Na ⁺	7.20
7.0–8.0	HEPES	50	Na ⁺ or Li ⁺	7.56
7.8–8.8	BICINE	50	Na ⁺	8.33

¹ Ref: Handbook of chemistry and physics, 83rd edition, CRC, 2002–2003.

Volatile buffer systems

pH range	Buffer system	Counter-ion	pKa-values for buffering ions ¹
3.3–4.3	Formic acid	H ⁺	3.75
3.3–4.3; 4.8–5.8	Pyridine/formic acid	HCOO ⁻	3.75; 5.25
3.3–4.3; 9.3–10.3	Trimethylamine/formic acid	HCOO ⁻	4.75; 9.81
4.3–5.8	Pyridine/acetic acid	CH ₃ COO ⁻	4.75; 5.25
4.3–5.3; 9.3–10.3	Trimethylamine/acetic acid	CH ₃ COO ⁻	4.75; 9.81
3.3–4.3; 8.8–9.8	Ammonia/formic acid	HCOO ⁻	3.75; 9.25
4.3–5.3; 8.8–9.8	Ammonia/acetic acid	CH ₃ COO ⁻	4.75; 9.25
5.9–6.9; 9.3–10.3	Trimethylamine/carbonate	CO ₃ ²⁻	6.35; 9.81
5.9–6.9; 8.8–9.8	Ammonium bicarbonate	HCO ₃ ⁻	6.35; 9.25
5.9–6.9; 8.8–9.8	Ammonium carbonate/ammonia	CO ₃ ²⁻	6.35; 9.25
5.9–6.9; 8.8–9.8	Ammonium carbonate	CO ₃ ²⁻	6.35; 9.25
4.3–5.3; 7.2–8.2	N-ethylmorpholine/acetate	HCOO ⁻	4.75; 7.72

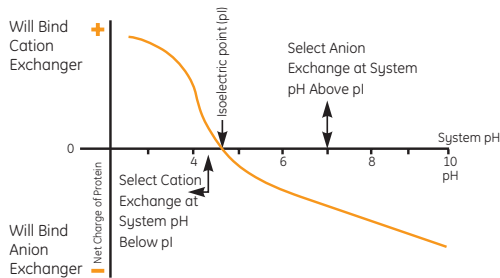
¹ Ref: Handbook of chemistry and physics, 83rd edition, CRC, 2002–2003.

ÄKTA™ chromatography systems provide advice on buffer recipes for each pH and medium. The BufferPrep function, available in selected systems, compensates automatically for changes in pH caused by changes in salt concentration and temperature, ensuring constant pH throughout the separation.

Selection guide - Ion Exchange Media

Selecting an anion or cation exchanger

Ion exchange separates proteins on the basis of differences in their net surface charge in relation to the pH of the surroundings. The figure below illustrates how the net charge of a protein can vary with pH. Every protein has its own charge/pH relationship.



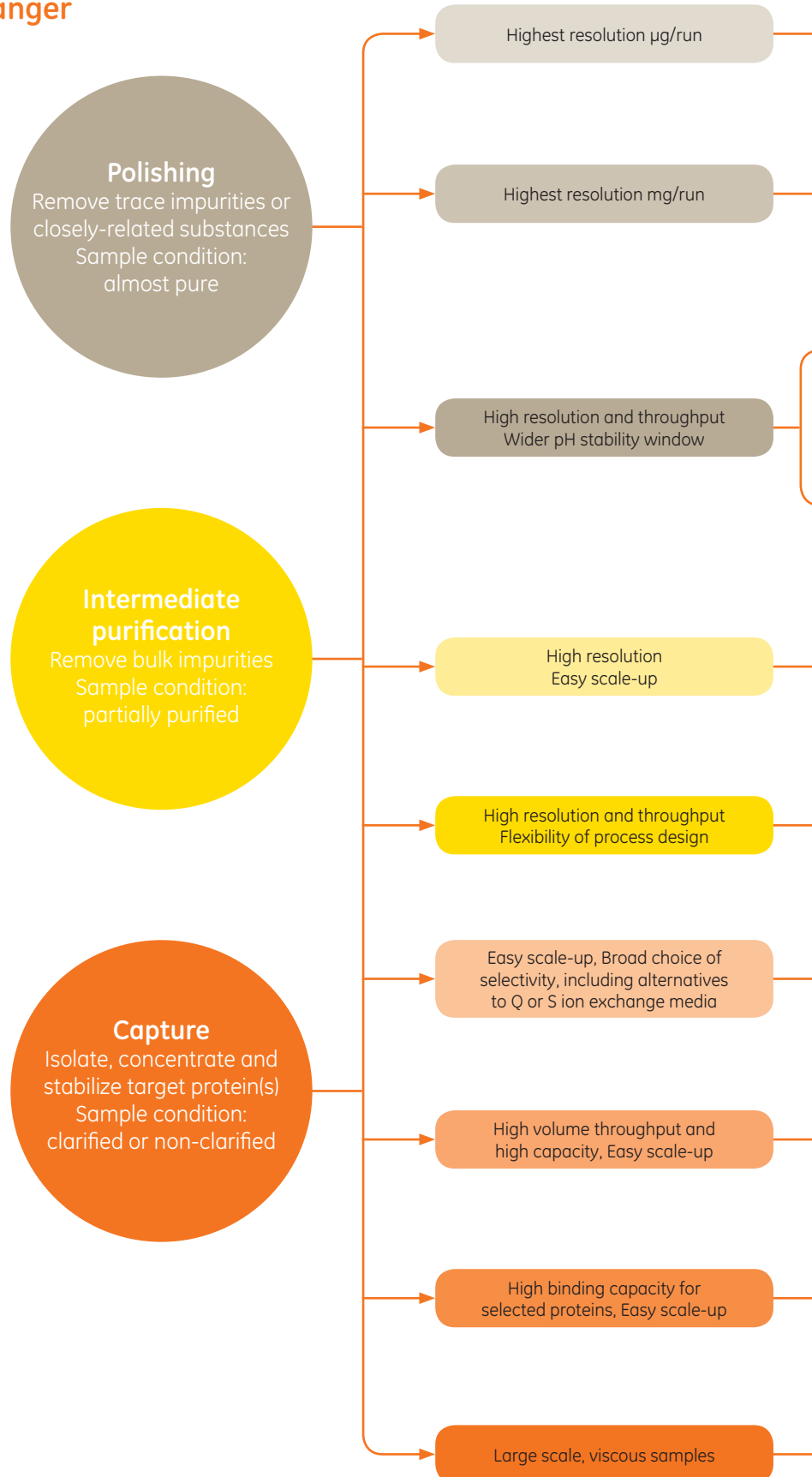
If isoelectric point (pI) of the target protein is known:

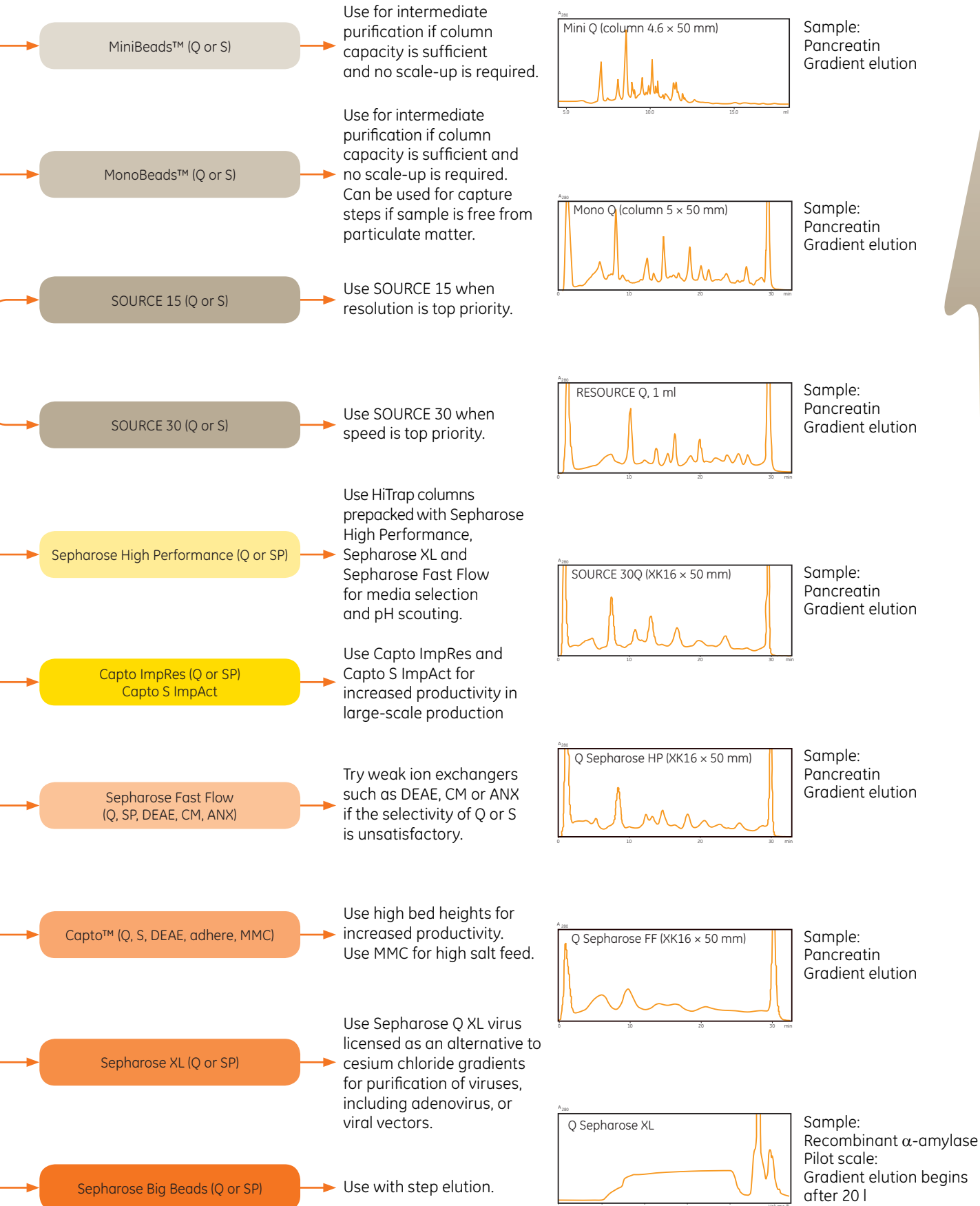
- select an anion exchanger (Q, DEAE, ANX) with a buffer pH above the pI.
- select a cation exchanger (S, SP, CM) with a buffer pH below the pI.

If pI is unknown:

- test for selectivity using a strong ion exchanger, Q, S or SP. Strong ion exchangers maintain their charge over a wider pH range than weak ion exchangers and are suitable for most applications.

A typical purification strategy has three phases: **Capture, Intermediate Purification and Polishing (CIPPP)**. Each phase has a specific objective, dependent largely on the properties of the starting material. Select the appropriate ion exchange medium according to the objective of your purification step and the condition of your starting material.





Products for Ion Exchange

Product		Ordering Information	Column dimensions diam. (mm)/ h(mm)/Pack size	Bed volume (ml) approx.	Recommended working flow range	Maximum flow	Max pressure (MPa) ¹ Over the packed bed, Over the hardware (1 MPa = 10 bar)
Prepacked columns/Bulk media		Code No.					
	Mini Q™ PC 3.2/3	17-0686-01	3.2/30	0.24	0.1–1.0 ml/min	1 ml/min	8/10
	Mini S™ PC 3.2/3	17-0687-01	3.2/30	0.24	0.1–1.0 ml/min	1 ml/min	8/10
	Mini Q 4.6/50 PE	17-5177-01	4.6/50	0.8	0.5–2.0 ml/min	2 ml/min	18/18
	Mini S 4.6/50 PE	17-5178-01	4.6/50	0.8	0.5–2.0 ml/min	2 ml/min	18/18
	Mono Q™ 5/50 GL	17-5166-01	5/50	1	0.5–3 ml/min	3 m/min	4/10
	Mono Q PC 1.6/5	17-0671-01	1.6/5	0.1	0.01–0.4 ml/min	0.4 ml/min	5/8
	Mono Q 10/100 GL	17-5167-01	10/100	8	2–6 ml/min	10 ml/min	4/5
	Mono Q 4.6/100 PE	17-5179-01	4.6/100	1.7	0.5–3 ml/min	3 ml/ml	4/18
	Mono Q HR 16/10	17-0506-01	16/100	20	up to 10 ml/min	10 ml/min	3/3
	Mono S™ 5/50 GL	17-5168-01	5/50	1	0.5–3 ml/min	3 ml/min	4/10
	Mono S PC 1.6/5	17-0672-01	1.6/5	0.1	0.01–0.4 ml/min	0.4 ml/min	5/8
	Mono S 10/100 GL	17-5169-01	10/100	8	2–6 ml/min	10 ml/min	4/5
	Mono S 4.6/100 PE	17-5180-01	4.6/100	1.7	0.5–3 ml/min	3 ml/ml	4/18
	Mono S HR 16/10	17-0507-01	16/100	20	up to 10 ml/min	10 ml/min	3/3
	RESOURCE™ Q	1 ml 17-1177-01	6.4/30	1	1.0–10 ml/min	10 ml/min	1.5/4
	RESOURCE Q	6 ml 17-1179-01	16/30	6	1.0–60 ml/min	60 ml/min	0.6/4
	SOURCE™ 15Q 4.6/100 PE	17-5181-01	4.6/100	1.7	0.5–2.5 ml/min	5 ml/min	4/18
	RESOURCE S	1 ml 17-1178-01	6.4/30	1	1.0–10 ml/min	10 ml/min	1.5/4
	RESOURCE S	6 ml 17-1180-01	16/30	6	1.0–60 ml/min	60 ml/min	0.6/4
	SOURCE 15S 4.6/100 PE	17-5182-01	4.6/100	1.7	0.5–2.5 ml/min	5 ml/min	4/18
	SOURCE 15Q	17-0947-01 17-0947-05	50 ml 200 ml	–	150–900 cm/h	1800 cm/h	0.5/–
	SOURCE 15S	17-0944-01 17-0944-05	50 ml 200 ml	–	150–900 cm/h	1800 cm/h	0.5/–
	SOURCE 30Q	17-1275-01 17-1275-02	50 ml 200 ml	–	300–1000 cm/h	2000 cm/h	0.3/–
	SOURCE 30S	17-1273-01 17-1273-02	50 ml 200 ml	–	300–1000 cm/h	2000 cm/h	0.3/–
	HiTrap Q HP	5 × 1 ml 17-1153-01 5 × 5 ml 17-1154-01	7/25 16/25	1 5	up to 1 ml/min up to 5 ml/min	4 ml/min 20 ml/min	0.3/0.5
	HiTrap SP HP	5 × 1 ml 17-1151-01 5 × 5 ml 17-1152-01	7/25 16/25	1 5	up to 1 ml/min up to 5 ml/min	4 ml/min 20 ml/min	0.3/0.5
	HiScreen Q HP	1 × 4.7 ml 28-9505-11	7.7/100	4.7	0.6 ml/min	1.2 ml/min	0.3/0.8
	HiScreen Sp HP	1 × 4.7 ml 28-9505-15	7.7/100	4.7	0.6 ml/min	1.2 ml/min	0.3/0.8
	Q Sepharose High Performance	17-1014-01	75 ml	–	up to 150 cm/h	150 cm/h	0.5/–
	SP Sepharose High Performance	17-1087-01	75 ml	–	up to 150 cm/h	150 cm/h	0.5/–
	HiTrap Capto Q ImpRes	5 × 1 ml 17-5470-51 5 × 5 ml 17-5470-55	7/25 16/25	1 5	up to 1 ml/min up to 5 ml/min	4 ml/min 20 ml/min	0.3/0.5
	HiTrap Capto SP ImpRes	5 × 1 ml 17-5468-51 5 × 5 ml 17-5468-55	7/25 16/25	1 5	up to 1 ml/min up to 5 ml/min	4 ml/min 20 ml/min	0.3/0.5
	HiTrap Capto S ImpAct	5 × 1 ml 17-3717-51 5 × 5 ml 17-3717-55	7/25 16/25	1 5	up to 1 ml/min up to 5 ml/min	4 ml/min 20 ml/min	0.3/0.5
	HiScreen Capto Q ImpRes	1 × 4.7 ml 17-5470-15	7.7/100	4.7	1.2 ml/min	2.3 ml/min	0.4/0.8
	HiScreen Capto SP ImpRes	1 × 4.7 ml 17-5468-15	7.7/100	4.7	1.2 ml/min	2.3 ml/min	0.4/0.8
	HiScreen Capto S ImpAct	1 × 4.7 ml 17-3717-47	7.7/100	4.7	1.2 ml/min	2.3 ml/min	0.4/0.8
	Capto Q ImpRes	17-5470-10 17-5470-02	25 ml 100 ml	–	approx. 300 cm/h	300 cm/h	0.3/–
	Capto SP ImpRes	17-5468-10 17-5468-02	25 ml 100 ml	–	approx. 300 cm/h	300 cm/h	0.3/–
	HiTrap IEX Selection Kit	7 × 1 ml ⁵ 17-6002-33	7/25	1	up to 1 ml/min	4 ml/min	0.3/0.5
	HiTrap Q FF	5 × 1 ml 17-5053-01 5 × 5 ml 17-5156-01	7/25 16/25	1 5	up to 1 ml/min up to 5 ml/min	4 ml/min 20 ml/min	0.3/0.5
	HiTrap SP FF	5 × 1 ml 17-5054-01 5 × 5 ml 17-5157-01	7/25 16/25	1 5	up to 1 ml/min up to 5 ml/min	4 ml/min 20 ml/min	0.3/0.5
	HiTrap DEAE FF	5 × 1 ml 17-5055-01 5 × 5 ml 17-5154-01	7/25 16/25	1 5	up to 1 ml/min up to 5 ml/min	4 ml/min 20 ml/min	0.3/0.5
	HiTrap ANX FF (high sub)	5 × 1 ml 17-5162-01 5 × 5 ml 17-5163-01	7/25 16/25	1 5	up to 1 ml/min up to 5 ml/min	4 ml/min 20 ml/min	0.3/0.5
	HiTrap CM FF	5 × 1 ml 17-5056-01 5 × 5 ml 17-5155-01	7/25 16/25	1 5	up to 1 ml/min up to 5 ml/min	4 ml/min 20 ml/min	0.3/0.5
	HiPrep Q FF 16/10	28-9365-43	16/100	20	2–10 ml/min	10 ml/min	0.15/0.5
	HiPrep SP FF 16/10	28-9365-44	16/100	20	2–10 ml/min	10 ml/min	0.15/0.5
	HiPrep CM FF 16/10	28-9365-42	16/100	20	2–10 ml/min	10 ml/min	0.15/0.5
	HiPrep DEAE FF 16/10	28-9365-41	16/100	20	2–10 ml/min	10 ml/min	0.15/0.5
	HiPrep Q HP 16/10	29-0181-82	16/100	20	up to 5 ml/min	5ml/min	0.3/0.5
	HiPrep SP HP 16/10	29-0181-83	16/100	20	up to 5 ml/min	5ml/min	0.3/0.5

pH working range ²	pH stability ³ (long term)	pH stability ⁴ (short term, cleaning)	Type of ion exchanger	Nominal bead size (µm)	Functional group	Examples of dynamic binding capacities mg/ml medium
3-11	3-11	1-14	strong anion	3 (monosized)	-CH ₂ N ⁺ (CH ₃) ₃	α-amylase (M _r 49 000) 6 mg/ml Trypsin inhibitor (M _r 20 100) 6 mg/ml
3-11	3-11	1-14	strong cation	3 (monosized)	-CH ₂ SO ₃ ⁻	Ribonuclease (M _r 13 700) 5 mg/ml Lysozyme (M _r 14 300) 5 mg/ml
3-11	3-11	1-14	strong anion	3 (monosized)	-CH ₂ N ⁺ (CH ₃) ₃	α-amylase (M _r 49 000) 6 mg/ml Trypsin inhibitor (M _r 20 100) 6 mg/ml
3-11	3-11	1-14	strong cation	3 (monosized)	-CH ₂ SO ₃ ⁻	Ribonuclease (M _r 13 700) 5 mg/ml Lysozyme (M _r 14 300) 5 mg/ml
2-12	2-12	2-14	strong anion	10 (monosized)	-CH ₂ N ⁺ (CH ₃) ₃	Thyroglobulin (M _r 669 000) 25 mg/ml
2-12	2-12	2-14	strong anion	10 (monosized)		HSA (M _r 68 000) 65 mg/ml α-lactalbumin (M _r 14 300) 80 mg/ml
2-12	2-12	2-14	strong cation	10 (monosized)	-CH ₂ SO ₃ ⁻	IgG (human) (M _r 160 000) 75 mg/ml
2-12	2-12	2-14	strong anion	10 (monosized)		Ribonuclease (M _r 13 700) 75 mg/ml
2-12	2-12	1-14	strong anion	15 (monosized)	-CH ₂ N ⁺ (CH ₃) ₃	BSA (M _r 67 000) 45 mg/ml
2-13	2-12	1-14	strong cation	15 (monosized)	-CH ₂ SO ₃ ⁻	Lysozyme (M _r 14 500) 80 mg/ml
2-12	2-12	1-14	strong anion	15 (monosized)	-CH ₂ N ⁺ (CH ₃) ₃	BSA (M _r 67 000) 45 mg/ml
2-12	2-13	1-14	strong cation	15 (monosized)	-CH ₂ SO ₃ ⁻	Lysozyme (M _r 14 500) 80 mg/ml
2-13	2-12	1-14	strong anion	30 (monosized)	-CH ₂ N ⁺ (CH ₃) ₃	HSA (M _r 68 000) 50 mg/ml
2-13	2-13	1-14	strong cation	30 (monosized)	-CH ₂ SO ₃ ⁻	Lysozyme (M _r 14 500) 80 mg/ml
2-12	2-12	1-14	strong anion	34	-CH ₂ N ⁺ (CH ₃) ₃	HSA (M _r 68 000) 50 mg/ml
4-13	4-13	3-14	strong cation	34	-CH ₂ CH ₂ CH ₂ SO ₃ ⁻	Ribonuclease (M _r 13 700) 55 mg/ml
2-12	2-12	1-14	strong anion	34	-CH ₂ N ⁺ (CH ₃) ₃	BSA (M _r 67 000) 70 mg/ml
4-12	4-12	3-14	strong cation	34	-CH ₂ CH ₂ CH ₂ SO ₃ ⁻	Ribonuclease (M _r 13 700) 55 mg/ml
2-12	2-12	1-14	strong anion	34	-CH ₂ N ⁺ (CH ₃) ₃	BSA (M _r 67 000) 70 mg/ml
4-13	4-13	3-14	strong cation	34	-CH ₂ CH ₂ CH ₂ SO ₃ ⁻	Ribonuclease (M _r 13 700) 55 mg/ml
2-12	2-12	2-14	strong anion	40	-CH ₂ N ⁺ (CH ₃) ₃	> 55 mg BSA/ml medium > 48 mg β-lactoglobulin/ml medium
4-12	4-12	3-14	strong cation	40	-CH ₂ CH ₂ CH ₂ SO ₃ ⁻	> 70 mg lysozyme/ml medium > 95 mg BSA/ml medium
4-12	4-12	3-14	strong cation	50	SO ₃ ⁻	> 90 mg lysozyme/ml medium > 85 mg BSA/ml medium > 100 mg IgG/ml medium
2-12	2-12	2-14	strong anion	40	-CH ₂ N ⁺ (CH ₃) ₃	> 55 mg BSA/ml medium > 48 mg β-Lactoglobulin/ml medium
4-12	4-12	3-14	strong cation	40	-CH ₂ CH ₂ CH ₂ SO ₃ ⁻	> 100 mg IgG/ml medium > 95 mg BSA/ml medium
4-12	4-12	3-14	strong cation	50	SO ₃ ⁻	> 90 mg lysozyme/ml medium > 85 mg BSA/ml medium > 100 mg IgG/ml medium
2-12	2-12	2-14	strong anion	40	-CH ₂ N ⁺ (CH ₃) ₃	> 55 mg BSA/ml medium > 48 mg β-lactoglobulin/ml medium
4-12	4-12	3-14	strong cation	40	-CH ₂ CH ₂ CH ₂ SO ₃ ⁻	> 70 mg lysozyme/ml medium > 95 mg BSA/ml medium
5	5	5	5	90	5	5
2-12	2-12	1-14	strong anion	90	-CH ₂ N ⁺ (CH ₃) ₃	HSA (M _r 68 000) 120 mg/ml
4-13	4-13	3-14	strong cation	90	-CH ₂ CH ₂ CH ₂ SO ₃ ⁻	Ribonuclease A (M _r 13 700) 70 mg/ml
2-9	2-13	1-14	weak anion	90	-O-CH ₂ CHOHCH ₂ N ⁺ H(CH ₂ CH ₃) ₂	HSA (M _r 68 000) 110 mg/ml
2-9	3-13	2-14	weak anion	90	-O-CH ₂ CHOHCH ₂ OCH ₂ CHOHCH ₂ N ⁺ H(CH ₂ CH ₃) ₂	BSA (M _r 67 000) 43 mg/ml Thyroglobulin (M _r 669 000) 5 mg/ml
6-10	4-13	2-14	weak cation	90	-O-CH ₂ COO ⁻	Ribonuclease A (M _r 13 700) 50 mg/ml
2-12	2-12	1-14	strong anion	90	-CH ₂ N ⁺ (CH ₃) ₃	HSA (M _r 68 000) 120 mg/ml
4-13	4-13	3-14	strong anion	90	-CH ₂ CH ₂ CH ₂ SO ₃ ⁻	Ribonuclease (M _r 13 700) 70 mg/ml
6-10	4-13	2-14	weak cation	90	-O-CH ₂ COO ⁻	Ribonuclease (M _r 13 700) 50 mg/ml
2-9	2-13	1-14	weak anion	90	-O-CH ₂ CHOHCH ₂ N ⁺ H(CH ₂ CH ₃) ₂	HSA (M _r 68 000) 110 mg/ml
2-12	2-12	1-14	strong anion	34	CH ₃ N ⁺ (CH ₃) ₃	BSA (60 mg/ml)
4-12	4-12	3-14	strong cation	34	CH ₃ -CH ₂ -CH ₂ -SO ₃	Ribonuclease (55 mg/ml)

Product		Ordering Information	Column dimensions diam. (mm)/ h(mm)/Pack size	Bed volume (ml) approx.	Recommended working flow range	Maximum flow	Max pressure (MPa) ¹ Over the packed bed/ Over the hardware (1 MPa = 10 bar)
Prepacked columns/Bulk media		Code No.					
Q Sepharose Fast Flow		17-0510-10 17-0510-01	25 ml 300 ml	–	50–400 cm/h	750 cm/h	0.3/–
SP Sepharose Fast Flow		17-0729-10 17-0729-01	25 ml 300 ml	–	50–400 cm/h	750 cm/h	0.3/–
DEAE Sepharose Fast Flow		17-0709-10 17-0709-01	25 ml 500 ml	–	50–400 cm/h	750 cm/h	0.3/–
ANX Sepharose 4 Fast Flow (high sub)		17-1287-10 17-1287-01	25 ml 500 ml	–	50–300 cm/h	400 cm/h	0.3/–
CM Sepharose Fast Flow		17-0719-10 17-0719-01	25 ml 500 ml	–	50–400 cm/h	750 cm/h	0.3/–
HiTrap Capto IEX Selection Kit	5 × 1 ml ¹¹	28-9343-88	7/25	1	1 ml/min	4 ml/min	0.3/0.5
HiTrap Capto Q	5 × 1 ml ⁶ 5 × 5 ml ⁶	11-0013-02 11-0013-03	7/25 16/25	1 5	1 ml/min 5 ml/min	4 ml/min 20 ml/min	0.3/0.5
HiTrap Capto ViralQ	5 × 5 ml ⁶	28-9078-09	16/25	5	5 ml/min	20 ml/min	
HiTrap Capto S	5 × 1 ml 5 × 5 ml	17-5441-22 17-5441-23	7/25 16/25	1 5	1 ml/min 5 ml/min	4 ml/min 20 ml/min	0.3/0.5
HiTrap Capto DEAE	5 × 1 ml 5 × 5 ml	28-9165-37 28-9165-40	7/25 16/25	1 5	1 ml/min 5 ml/min	4 ml/min 20 ml/min	0.3/0.5
HiTrap Capto adhere	5 × 1 ml 5 × 5 ml	28-4058-44 28-4058-46	7/25 16/25	1 5	1 ml/min 5 ml/min	4 ml/min 20 ml/min	0.3/0.5
HiTrap Capto MMC	5 × 1 ml 5 × 5 ml	11-0032-73 11-0032-75	7/25 16/25	1 5	1 ml/min 5 ml/min	4 ml/min 20 ml/min	0.3/0.5
HiScreen Q FF	1 × 4.7 ml	28-9505-10	7.7/100	4.7	2.3 ml/min	3.5 ml/min	0.15/0.8
HiScreen SP FF	1 × 4.7 ml	28-9505-13	7.7/100	4.7	2.3 ml/min	3.5 ml/min	0.15/0.8
HiScreen DEAE FF	1 × 4.7 ml	28-9782-45	7.7/100	4.7	2.3 ml/min	3.5 ml/min	0.15/0.8
Capto Q ⁶		17-5316-10 17-5316-02	25 ml 100 ml	–	< 700 cm/h	> 700 cm/h ¹⁰	0.3/–
Capto ViralQ ⁶		28-9032-30 28-9032-31	25 ml 100 ml	–	< 700 cm/h	> 700 cm/h ¹⁰	0.3/–
Capto S		17-5441-10 17-5441-01	25 ml 100 ml	–	< 700 cm/h	> 700 cm/h ¹⁰	0.3/–
Capto S ImpAct		17-3717-01 17-3717-02	25 ml 100 m	–	< 700 cm/h	> 700cm/h ¹⁰	0.3/–
Capto DEAE		17-5443-10 17-5443-01	25 ml 100 ml	–	< 700 cm/h	> 700 cm/h ¹⁰	0.3/–
Capto adhere		17-5444-10 17-5444-01	25 ml 100 ml	–	< 600 cm/h	> 600 cm/h ¹⁰	0.3/–
Capto MMC		17-5317-10 17-5317-02	25 ml 100 ml	–	< 600 cm/h	> 600 cm/h ¹⁰	0.3/–
HiScreen™ Capto S	1 × 4.7 ml	28-9269-79	7.7/100	4.7	2.3–5.4 ml/min	5.4 ml/min	0.3/0.8
HiScreen Capto Q	1 × 4.7 ml	28-9269-78	7.7/100	4.7	2.3–5.4 ml/min	5.4 ml/min	0.3/0.8
HiScreen Capto DEAE	1 × 4.7 ml	28-9269-82	7.7/100	4.7	2.3–5.4 ml/min	5.4 ml/min	0.3/0.8
HiScreen Capto adhere	1 × 4.7 ml	28-9269-81	7.7/100	4.7	2.3–4.7 ml/min	4.7 ml/min	0.3/0.8
HiScreen Capto MMC	1 × 4.7 ml	28-9269-80	7.7/100	4.7	2.3–4.7 ml/min	4.7 ml/min	0.3/0.8
HiTrap Q XL	5 × 1 ml ⁶ 5 × 5 ml ⁶	17-5158-01 17-5159-01	7/25 16/25	1 5	up to 1 ml/min up to 5 ml/min	4 ml/min 20 ml/min	0.3/0.5
HiTrap SP XL	5 × 1 ml 5 × 5 ml	17-5160-01 17-5161-01	7/25 16/25	1 5	up to 1 ml/min up to 5 ml/min	4 ml/min 20 ml/min	0.3/0.5
HiPrep Q XL 16/10 ⁶		28-9365-38	16/100	20	2–10 ml/min	10 ml/min	0.15/0.5
HiPrep SP XL 16/10		28-9365-40	16/100	20	2–10 ml/min	10 ml/min	0.15/0.5
Q Sepharose XL virus licensed ⁶		17-5437-10	25 ml	–	100–500 cm/h	700 cm/h	0.3/–
Q Sepharose XL ⁶		17-5072-01	300 ml	–	100–500 cm/h	700 cm/h	
SP Sepharose XL		17-5073-01	300 ml	–	100–500 cm/h	700 cm/h	0.3/–
Q Sepharose Big Beads		17-0989-03	1 l	–	up to 500 cm/h	1800 cm/h	0.3/–
SP Sepharose Big Beads		17-0657-03	1 l	–	up to 500 cm/h	1800 cm/h	0.3/–

All ranges quoted are estimates based on our knowledge and experience.

¹ Maximum operating back pressure refers to the pressure above which the medium begins to compress.

² Working pH range refers to the pH interval where the medium binds protein as intended or as needed for elution, without adverse long term effects.

³ pH stability (long term) refers to the pH interval where the medium is stable over a long period of time without adverse effects on its subsequent chromatographic performance.

⁴ pH stability (cleaning) refers to the pH interval for regeneration, cleaning-in-place and sanitization procedures.

⁵ HiTrap IEX Selection Kit includes: HiTrap Q FF 1 ml, HiTrap SP FF 1 ml, HiTrap DEAE FF 1 ml, HiTrap CM FF 1 ml, HiTrap ANX FF (high sub) 1 ml, HiTrap Q XL 1 ml, and HiTrap SP XL 1 ml.

⁶ See important legal information on the backpage about Q Sepharose XL virus licensed and Capto ViralQ products.

⁷ Capto MMC is a multimodal weak cation exchanger and the ligand is charged in the pH interval 6–10. Outside this pH interval other interactions are still active.

⁸ Capto adhere is in antibody processes used in flowthrough mode, and the loading can be in the region 100–300 mg/ml. The loading conditions should be optimized in each specific case.

⁹ The maximum pressure of the media has not been tested for more than 0.3 MPa (3 bar).

¹⁰ The maximum flow rate of the media has not been tested for more than 700 or 600 cm/h.

¹¹ HiTrap Capto IEX Selection Kit includes: HiTrap Capto Q 1 ml, HiTrap Capto S 1 ml, HiTrap Capto DEAE 1 ml, HiTrap Capto MMC 1 ml, and HiTrap Capto adhere 1 ml.

Maximum flow velocity (linear flow) is calculated from measurement in packed columns as follows:

Sepharose Big Beads, ANX Sepharose 4 Fast Flow (high sub): XK50, bed height 25 cm

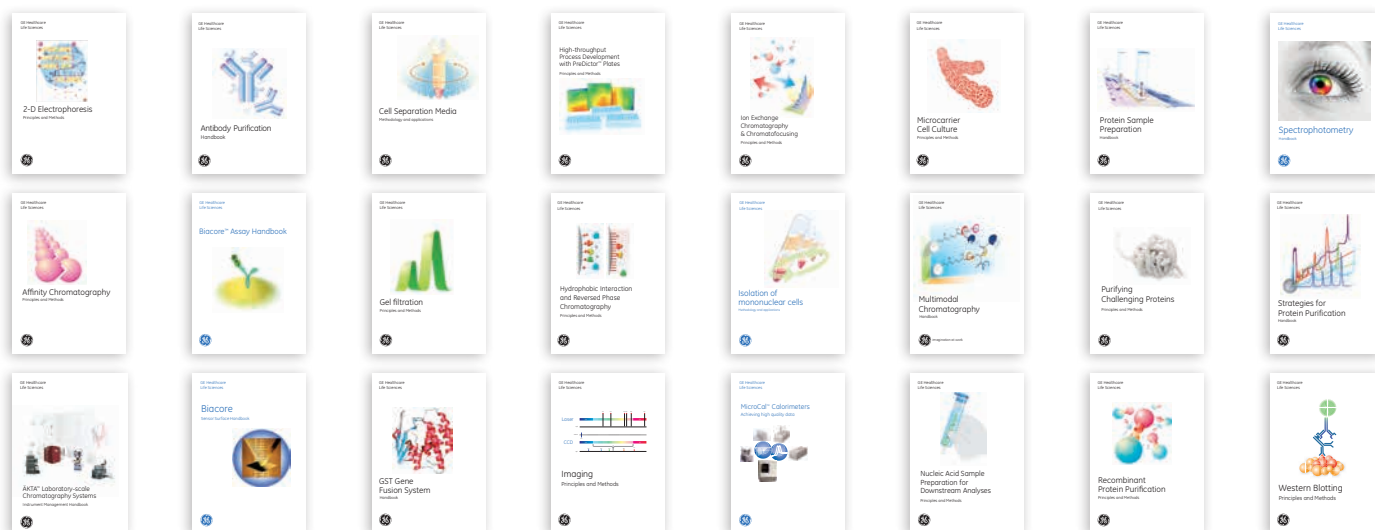
Sepharose XL and Sepharose Fast Flow: XK50, bed height 15 cm

Sepharose High Performance: BioPilot™ 60, bed height 30 cm

SOURCE 30: FineLINE™ 100, bed height 10 cm

SOURCE 15: RESOURCE, bed height 3 cm

pH working range ²	pH stability ³ (long term)	pH stability ⁴ (short term, cleaning)	Type of ion exchanger	Nominal bead size (µm)	Functional group	Examples of dynamic binding capacities mg/ml medium
2–12	2–12	1–14	strong anion	90	-CH ₂ N ⁺ (CH ₃) ₃	Thyroglobulin (M _r 669 000) 3 mg/ml HSA (M _r 68 000) 120 mg/ml α-lactalbumin (M _r 14 300) 110 mg/ml
4–13	4–13	3–14	strong cation	90	-CH ₂ CH ₂ CH ₂ SO ₃ ⁻	IgG (human) (M _r 160 000) 50 mg/ml Bovine COHb (M _r 69 000) 50 mg/ml Ribonuclease (M _r 13 700) 70 mg/ml
2–9	2–13	1–14	weak anion	90	-O-CH ₂ CHOHCH ₂ N ⁺ H(CH ₂ CH ₃) ₂	α-lactalbumin (M _r 14 300) 100 mg/ml HSA (M _r 68 000) 110 mg/ml
2–9	3–13	2–14	weak anion	90	-O-CH ₂ CHOHCH ₂ OCH ₂ CHOHCH ₂ N ⁺ H(CH ₂ CH ₃) ₂	Thyroglobulin (M _r 669 000) 5 mg/ml BSA (M _r 67 000) 43 mg/ml
6–10	4–13	2–14	weak cation	90	-O-CH ₂ COO ⁻	Ribonuclease (M _r 13 700) 50 mg/ml
11	11	11	11	90	11	11
2–12	2–12	2–14	strong anion	90	-O-CH ₂ CHOHCH ₂ N ⁺ (CH ₃) ₃	BSA (M _r 67 000) > 100 mg/ml
4–12	4–12	3–14	strong cation	90	-O-CH ₂ CH ₂ SO ₃ ⁻	Lysozyme (M _r 14 500) > 120 mg/ml
2–9	2–12	2–14	weak anion	90	-O-CH ₂ CH ₂ N ⁺ H(CH ₂ CH ₃) ₂	Ovalbumin (M _r 66 000) > 90 mg/ml
3–12	3–12	2–14	multimodal strong anion exchanger	75	-(OCH ₂ CH(OH)CH ₂) ₂ N ⁺ (CH ₃) (CH ₂ C ₆ H ₅)(CH ₂ CH ₂ OH)	N/A ⁸
2–12 ⁷	2–12	2–14	multimodal weak cation exchanger	75	-(OCH ₂ CH(OH)CH ₂) ₂ S(CH ₂) ₂ CH(COO ⁻)NHCOC ₆ H ₅	> 45 mg BSA/ml medium at 30 mS/cm
2–12	2–12	1–14	strong anion	90	-CH ₂ N ⁺ (CH ₃) ₃	HSA (M _r 68 000) 120 mg/ml
4–13	4–13	3–14	strong anion	90	-O-CH ₂ CHOHCH ₂ N ⁺ H(CH ₂ CH ₃) ₂	HSA (M _r 68 000) 110 mg/ml
2–9	2–13	1–14	strong anion	90	-O-CH ₂ CHOHCH ₂ N ⁺ H(CH ₂ CH ₃) ₂	HSA (M _r 68 000) 110 mg/ml
2–12	2–12	2–14	strong anion	90	-O-CH ₂ CHOHCH ₂ N ⁺ (CH ₃) ₃	BSA (M _r 67 000) > 100 mg/ml
2–12	2–12	2–14	strong anion	90	-O-CH ₂ CHOHCH ₂ N ⁺ (CH ₃) ₃	BSA (M _r 67 000) > 100 mg/ml
4–12	4–12	3–14	strong cation	90	-O-CH ₂ CH ₂ SO ₃ ⁻	Lysozyme (M _r 14 500) > 120 mg/ml
4–12	4–12	3–14	strong cation	50	SO ₃ ⁻	> 90 mg lysozyme/ml medium > 85 mg BSA/ml medium > 100 mg IgG/ml medium
2–9	2–12	2–14	weak anion	90	-O-CH ₂ CH ₂ N ⁺ H(CH ₂ CH ₃) ₂	Ovalbumin (M _r 66 000) > 90 mg/ml
3–12	3–12	2–14	multimodal strong anion exchanger	75	-(OCH ₂ CH(OH)CH ₂) ₂ N ⁺ (CH ₃) (CH ₂ C ₆ H ₅)(CH ₂ CH ₂ OH)	N/A ⁸
2–12 ⁷	2–12	2–14	multimodal weak cation exchanger	75	-(OCH ₂ CH(OH)CH ₂) ₂ S(CH ₂) ₂ CH(COO ⁻)NHCOC ₆ H ₅	45 mg BSA/ml medium at 30 mS/cm
4–12	4–12	3–14	strong cation	90	-O-CH ₂ CH ₂ SO ₃ ⁻	Lysozyme (M _r 14 500) > 120 mg/ml
2–12	2–12	2–14	strong anion	90	-CH ₂ N ⁺ (CH ₃) ₃	BSA (M _r 67 000) > 100 mg/ml
2–9	2–12	2–14	weak anion	90	-O-CH ₂ CH ₂ N ⁺ H(CH ₂ CH ₃) ₂	Ovalbumin (M _r 66 000) > 90 mg/ml
3–13	3–12	2–14	multimodal strong anion exchanger	75	-(OCH ₂ CH(OH)CH ₂) ₂ N ⁺ (CH ₃) (CH ₂ C ₆ H ₅)(CH ₂ CH ₂ OH)	N/A ⁸
2–12 ⁷	2–12	2–14	multimodal weak cation exchanger	75	-(OCH ₂ CH(OH)CH ₂) ₂ S(CH ₂) ₂ CH(COO ⁻)NHCOC ₆ H ₅	> 45 mg BSA/ml medium at 30 mS/cm
2–12	2–12	2–14	strong anion	90	-CH ₂ N ⁺ (CH ₃) ₃	BSA (M _r 67 000) > 130 mg/ml
4–13	4–13	3–14	strong cation	90	-CH ₂ CH ₂ CH ₂ SO ₃ ⁻	Lysozyme (M _r 14 300) > 160 mg/ml
2–12	2–12	2–14	strong anion	90	-CH ₂ N ⁺ (CH ₃) ₃	BSA (M _r 67 000) > 130 mg/ml
4–13	4–13	3–14	strong cation	90	-CH ₂ CH ₂ CH ₂ SO ₃ ⁻	Lysozyme (M _r 14 500) > 160 mg/ml
2–12	2–12	2–14	strong anion	90	-CH ₂ N ⁺ (CH ₃) ₃	BSA (M _r 67 000) > 130 mg/ml
4–13	4–13	3–14	strong cation	90	-CH ₂ CH ₂ CH ₂ SO ₃ ⁻	Lysozyme (M _r 14 500) > 160 mg/ml
2–12	2–12	2–14	strong anion	200	-CH ₂ N ⁺ (CH ₃) ₃	tested for specific application only
4–13	4–13	3–14	strong cation	200	-CH ₂ CH ₂ CH ₂ SO ₃ ⁻	tested for specific application only



2-D Electrophoresis using immobilized pH gradients
Principles and Methods
80-6429-60

Affinity Chromatography
Principles and Methods
18-1022-29

ÄKTA Laboratory-scale Chromatography Systems
Instrument Management Handbook
29-0108-31

Antibody Purification
Handbook
18-1037-46

Biacore Assay
Handbook
29-0194-00

Biacore Sensor Surface
BR-1005-71

Cell Separation Media
Methodology and Applications
18-1115-69

Gel Filtration
Principles and Methods
18-1022-18

GST Gene Fusion System
Handbook
18-1157-58

High-throughput Process Development with PreDicator Plates
Principles and Methods
28-9403-58

Hydrophobic Interaction and Reversed Phase Chromatography
Principles and Methods
11-0012-69

Imaging
Principles and Methods
29-0203-01

Ion Exchange Chromatography and Chromatofocusing
Principles and Methods
11-0004-21

Isolation of mononuclear cells
Methodology and Applications
18-1152-69

MicroCal Calorimetry—Achieving High Quality Data
Handbook
29-0033-51

Microcarrier Cell Culture
Principles and Methods
18-1140-62

Multimodal Chromatography
Handbook
29-0548-08

Nucleic Acid Sample Preparation for Downstream Analyses
Principles and Methods
28-9624-00

Protein Sample Preparation
Handbook
28-9887-41

Purifying Challenging Proteins
Principles and Methods
28-9095-31

Recombinant Protein Purification Handbook
Principles and Methods
18-1142-75

Spectrophotometry
Handbook
29-0331-82

Strategies for Protein Purification
Handbook
28-9833-31

Western Blotting
Principles and Methods
28-9998-97

For local office contact information, visit
www.gelifesciences.com/contact

www.gelifesciences.com/protein-purification

GE Healthcare Bio-Sciences AB
Björkgatan 30
751 84 Uppsala
Sweden

GE and GE monogram are trademarks of General Electric Company.

ÄKTA, BioPilot, Capto, FineLINE, HiLoad, HiScreen, HiPrep, HiTrap, MiniBeads, Mini Q, Mini S, MonoBeads, Mono Q, Mono S, RESOURCE, Sepharose, and SOURCE are trademarks of General Electric Company or one of its subsidiaries.

© 2000–2014 General Electric Company – All rights reserved.
First published 2000.

All goods and services are sold subject to the terms and conditions of sale of the company within GE Healthcare which supplies them. A copy of these terms and conditions is available on request. Contact your local GE Healthcare representative for the most current information.

GE Healthcare UK Limited
Amersham Place, Little Chalfont, Buckinghamshire, HP7 9NA, UK
GE Healthcare Europe GmbH
Munzinger Strasse 5, D-79111 Freiburg, Germany

GE Healthcare Bio-Sciences Corp.
800 Centennial Avenue, P.O. Box 1327, Piscataway, NJ 08855-1327, USA

GE Healthcare Japan Corporation
Sanken Bldg., 3-25-1, Hyakunincho, Shinjuku-ku, Tokyo 169-0073, Japan

