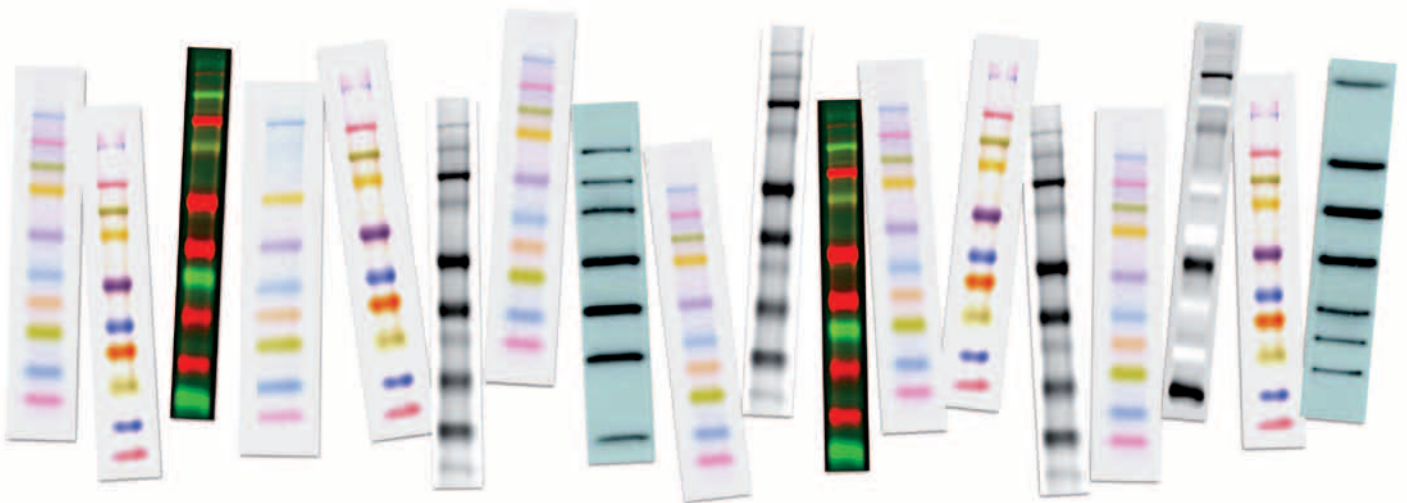
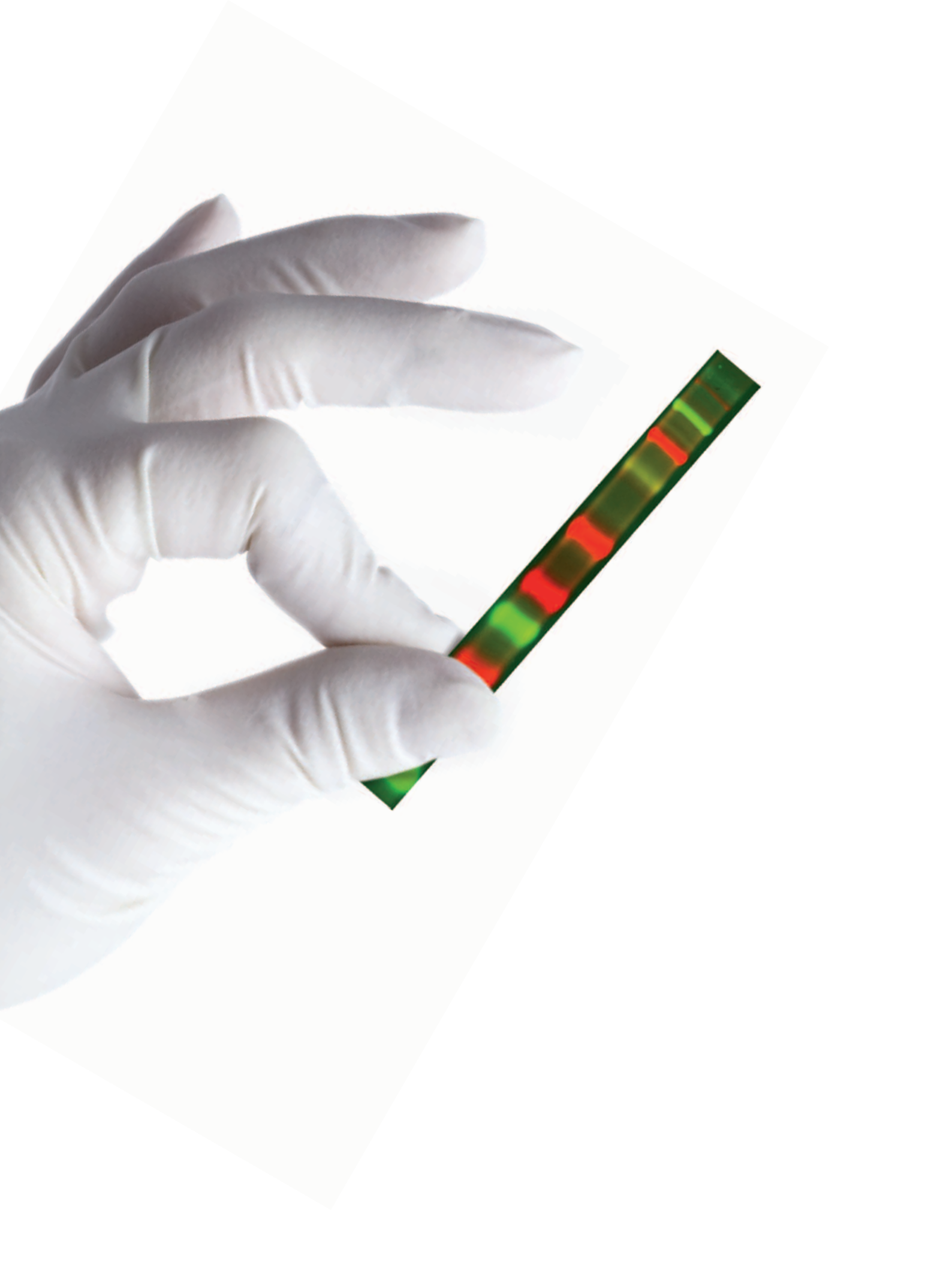


GE Healthcare
Life Sciences

Amersham™ Rainbow™ Markers

Accurate size determination of your protein on gels and blots





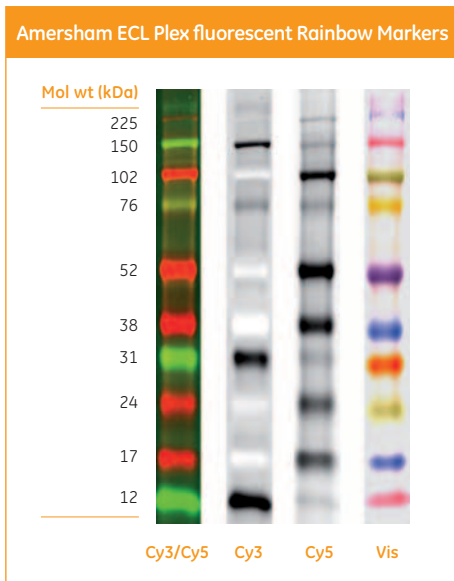
Amersham Rainbow Markers at a glance

Simpler and faster identification of your proteins of interest

To differentiate proteins with similar molecular weights on your gels or blots, you need the clearest protein standards to get the fastest results. Rely on the proven performance of Amersham Rainbow Markers that have been developed for optimal results.

- Broad color spectrum for easier band identification
- Sharper, more intense bands on gels and blots
- Improved band spacing for more accurate molecular weight determination
- Ready-to-load formulations
- Individual colored proteins to allow confirmation of transfer to membranes and orientation

Improved accuracy

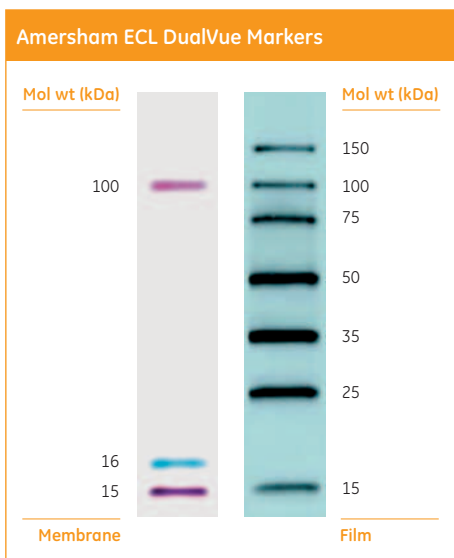


Amersham ECL Plex™ fluorescent Rainbow Markers

Optimized for use with the Amersham ECL Plex system. Amersham ECL Plex is a system that enables detection of one or two proteins on a Western blot at the same time.

The system is validated for use on Typhoon™ imagers, and delivers broad dynamic range with high linearity.

The markers are specially optimized to provide visible marker bands on gels and membranes, as well as fluorescent images using Cy™3 and Cy5 channels.



Amersham ECL DualVue™ Markers

Optimized for use with Amersham ECL™, Amersham ECL Prime, and Amersham ECL Select™. Amersham Western Blotting Systems ensure that you can always select the solution best suited to your application.

Accuracy

- Prestained markers indicate efficiency of protein transfer to membrane and blot orientation
- Tagged recombinant protein markers allow accurate calculation of molecular weight

Compatibility

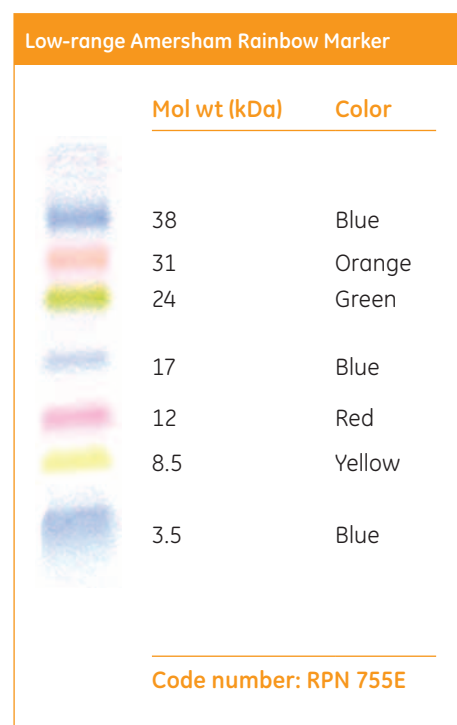
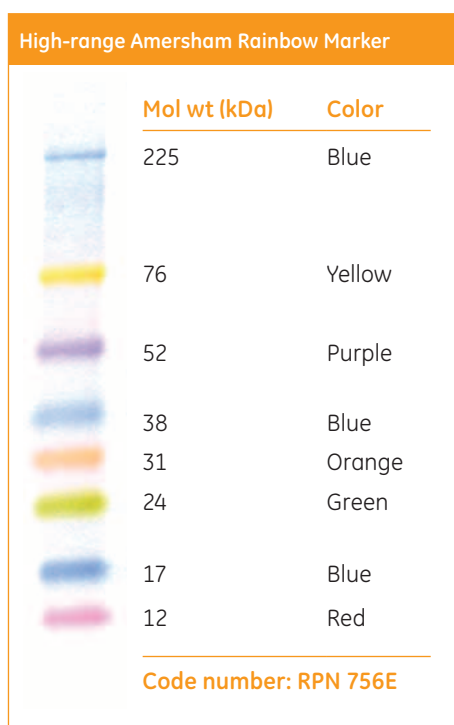
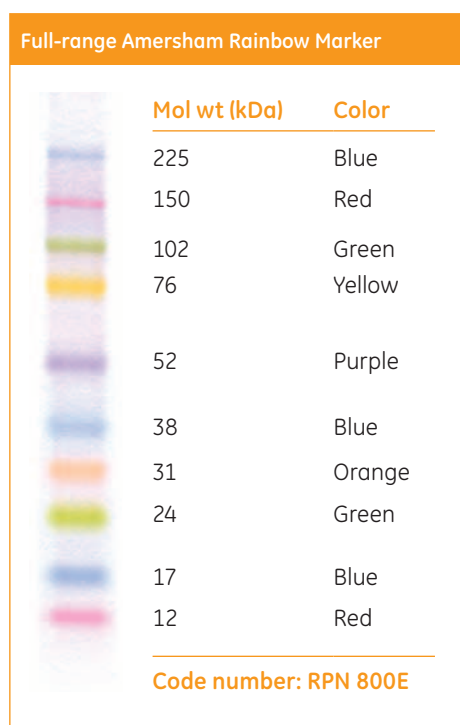
- Product is compatible with any HRP substrate as well as both PVDF and nitrocellulose membrane types
- Can be used with Amersham Hyperfilm™ or CCD imaging

Convenience

- Easy-to-follow protocol – one simple loading on the gel followed by addition of S-protein-HRP to the primary or secondary antibody incubation
- Each pack contains Amersham ECL DualVue markers and S-protein-HRP sufficient for 25 loadings

Amersham Rainbow Markers in detail

- Monitor progress of protein electrophoresis and assess transfer efficiency and molecular weight of blotted proteins without staining
- High intensity, prestained multicolored bands allow distinction of closely related proteins
- Full-range Amersham Rainbow Markers (M_r 12 000 to 225 000) use ten separate proteins with six different colors
- High-range Amersham Rainbow Markers (M_r 12 000 to 225 000) use eight separate proteins with six different colors
- Low-range Amersham Rainbow Markers (M_r 3 500 to 38 000) use seven separate proteins with five different colors
- For use on SDS-PAGE



Selection guide

Whatever your gel and Western blotting requirements are, we offer the widest range of protein markers and systems to meet your needs.

Product	Visualization	Code number	Volume	Number of Samples
Amersham Rainbow Markers (full-range)	Visible, multicolor	RPN 800E	250 µl	50
Amersham Rainbow Markers (high-range)	Visible, multicolor	RPN 756E	250 µl	50
Amersham Rainbow Markers (low-range)	Visible, multicolor	RPN 755E	250 µl	50
Amersham ECL Plex Markers (full-range)	Fluorescent & visible, multicolor	RPN 850E	120 µl	50
Amersham ECL Plex Markers (full-range)	Fluorescent & visible, multicolor	RPN 851E	500 µl	200
Amersham ECL DualVue Markers (full-range)	Chemiluminescent, visible	RPN 810	215 µl	25

Other related markers

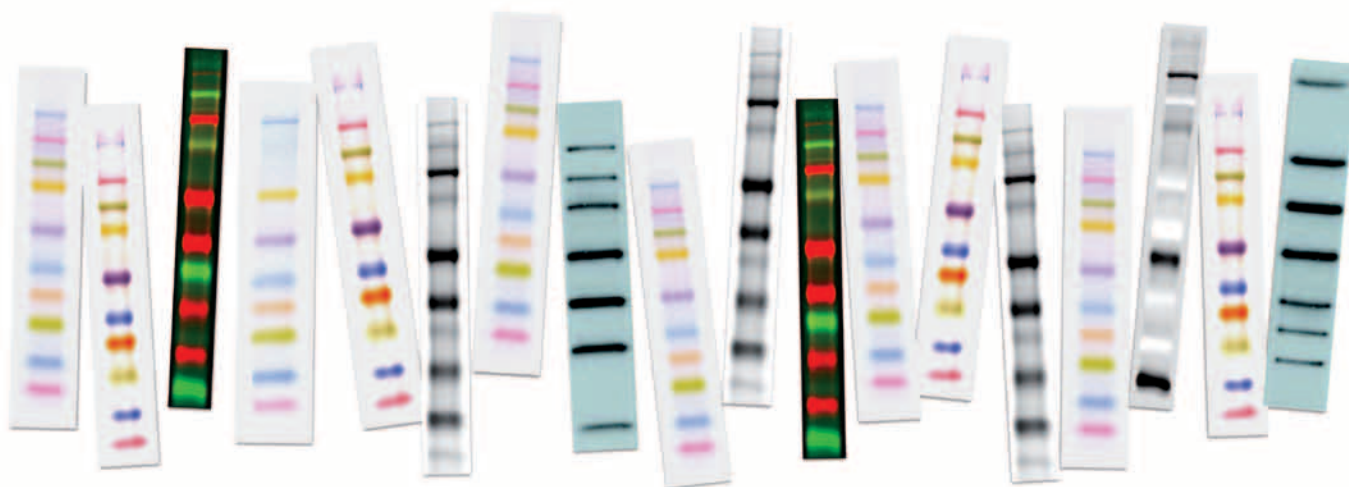
Product	Visualization	Code number
Protein molecular weight standards (Multiple ranges)	Unlabelled	17-0446-01
		17-0615-01
		17-0445-01

Related products

Amersham Western Blotting Systems deliver sensitivity, speed, and versatility. As the world's first chemiluminescent reagents, they have established a well-earned reputation for excellence. Amersham ECL, Amersham ECL Prime, and Amersham ECL Select are complemented by the Amersham ECL Plex fluorescent system, expanding your options even further.

	Amersham ECL	Amersham ECL Prime	Amersham ECL Select	Amersham ECL Plex
Recommended use	Routine Western blotting	Chemiluminescence	Low primary antibody concentration	Quantitative analysis, multiplexing of proteins of the same or different (M _r)
Sensitivity in model system (ng)*	~ 80	~ 20	~ 5	~ 5
Emission duration	< 2 h	< 24 h	< 8 h	> 3 months, protected from light
Recommended detection method	Amersham Hyperfilm Blue, CCD imagers	Amersham Hyperfilm ECL, CCD imagers	Amersham Hyperfilm ECL, CCD imagers	Fluorescence scanner and CCD imagers

*Detection of ERK 1/2 in HeLa cells lysate. Protein quantities refer to the total amount of loaded protein extracted from cell lysate, and protein of interest is just a fraction of that total amount.



GE Healthcare Life Sciences

For local office contact information, visit
www.gelifesciences.com/contact

www.gelifesciences.com/ecl

GE Healthcare Bio-Sciences AB
Björkgatan 30
751 84 Uppsala
Sweden



imagination at work

GE, imagination at work, and GE monogram are trademarks of General Electric Company.

Amersham, Cy, ECL, ECL DualVue, ECL Plex, ECL Select, Hyperfilm, Rainbow, and Typhoon are trademarks of GE Healthcare companies.

Amersham ECL Prime is manufactured and sold under license from Cyanagen Srl and is subject of US Canadian and EU patent application number US7803573; EP1962095; US7855287; EP1950207 US2012009603(A1); CA2742025; EP2405016, together with other equivalent granted patents and patent applications in other countries.

Amersham ECL Select is manufactured and sold under license from Cyanagen Srl and is subject of US Canadian and EU patent application number US7803573; EP1962095; US7855287; EP1950207 US2012009603(A1); CA2742025; EP2405016, together with other equivalent granted patents and patent applications in other countries.

Cy is manufactured under an exclusive license from Carnegie Mellon University and is covered by US patent numbers 5,486,616 and 5,627,027.

© 2007-2012 General Electric Company - All rights reserved.
First published Jul. 2007

All goods and services are sold subject to the terms and conditions of sale of the company within GE Healthcare which supplies them. A copy of these terms and conditions is available on request. Contact your local GE Healthcare representative for the most current information.

GE Healthcare UK Limited
Amersham Place
Little Chalfont
Buckinghamshire, HP7 9NA
UK

GE Healthcare Europe, GmbH
Munzinger Strasse 5
D-79111 Freiburg
Germany

GE Healthcare Bio-Sciences Corp.
800 Centennial Avenue, P.O. Box 1327
Piscataway, NJ 08855-1327
USA

GE Healthcare Japan Corporation
Sanken Bldg., 3-25-1, Hyakunincho
Shinjuku-ku, Tokyo 169-0073
Japan